

Self-retracting fall arrester with a cable length of 10 m, equipped with handled mechanism for retrieval. Can be used as a normal self-retracting fall arrester, the retrieval winch can be easily activated to safely rescue the worker in the event of an accident.

It can be installed hanging from an anchor point or fixed to the Tripods tripod legs using the special Cobra Lift Bracket (supplied separately).

Swivel connector equipped with fall indicator.

Galvanized steel cable d.4.8 mm. Working load limit: 150 kg.

Aluminum protection cover.



Ref.	Product name Nombre del producto	Weight Peso		Working load Max Carga de trabajo Max	CE	STANDARD
		kg	oz	kg		
3503	COBRA LIFT 10 m	11.8	416.5	150	EN 360	EN 1496/B

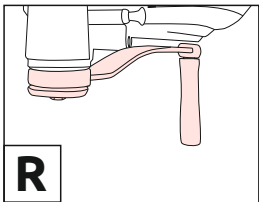
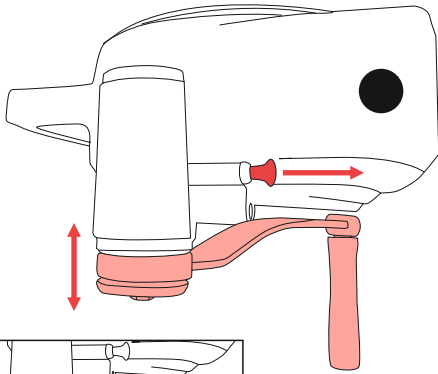
**COBRA LIFT fixed to the Tripos tripod legs using the special Cobra Lift Bracket (ref.3506)**



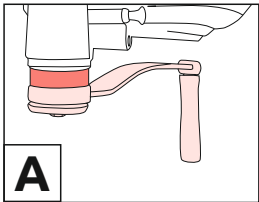
**Cobra Lift Bracket (ref.3506)**

Bracket for fastening the Cobra Lift device on the legs of the Tripos tripod.

COBRA LIFT selection of operating modes  
 COBRA LIFT selezione modalità di funzionamento  
 COBRA LIFT sélection des modalités de fonctionnement

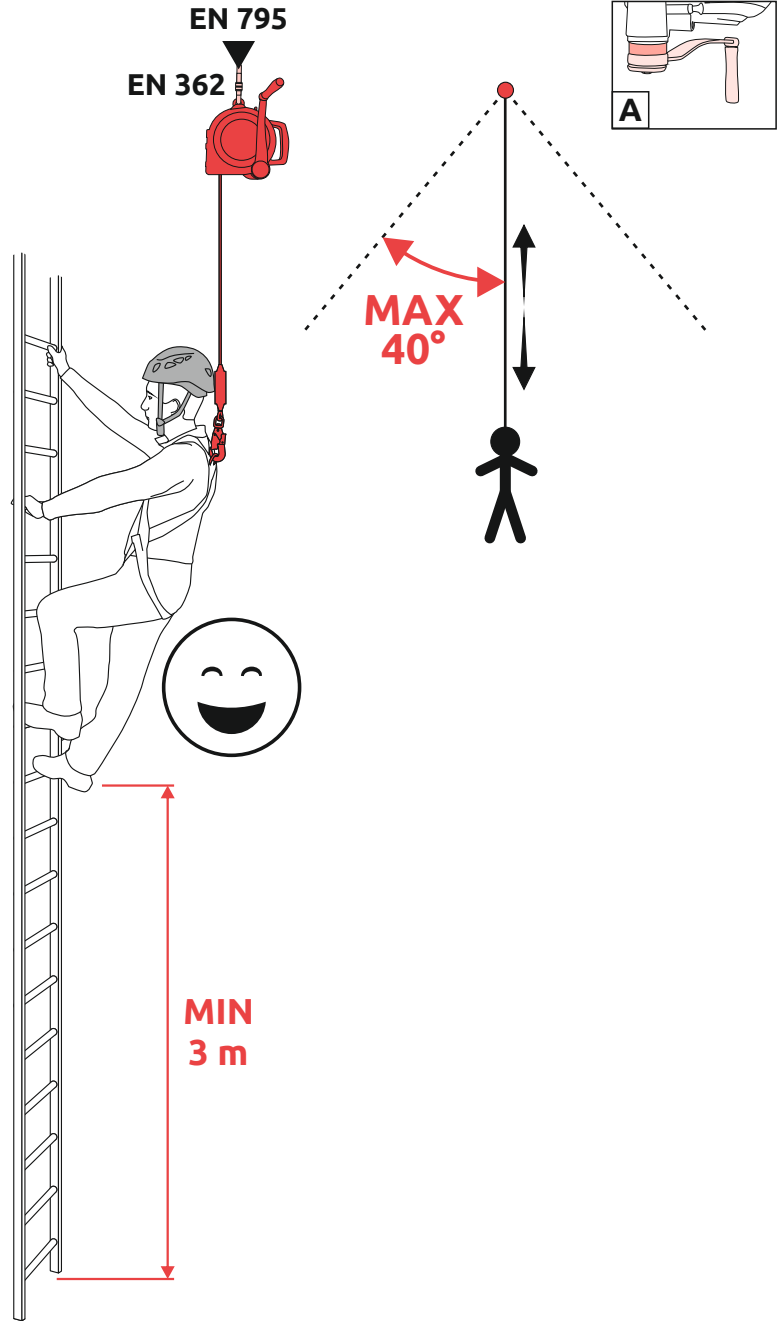


RESCUE  
 SOCCORSO  
 SECOURS

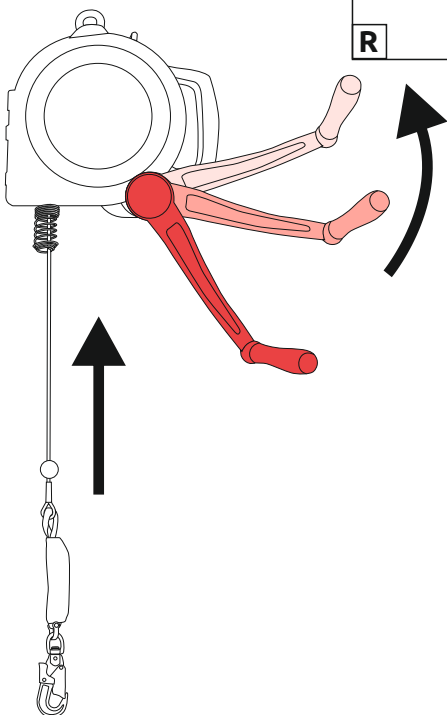
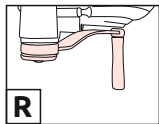


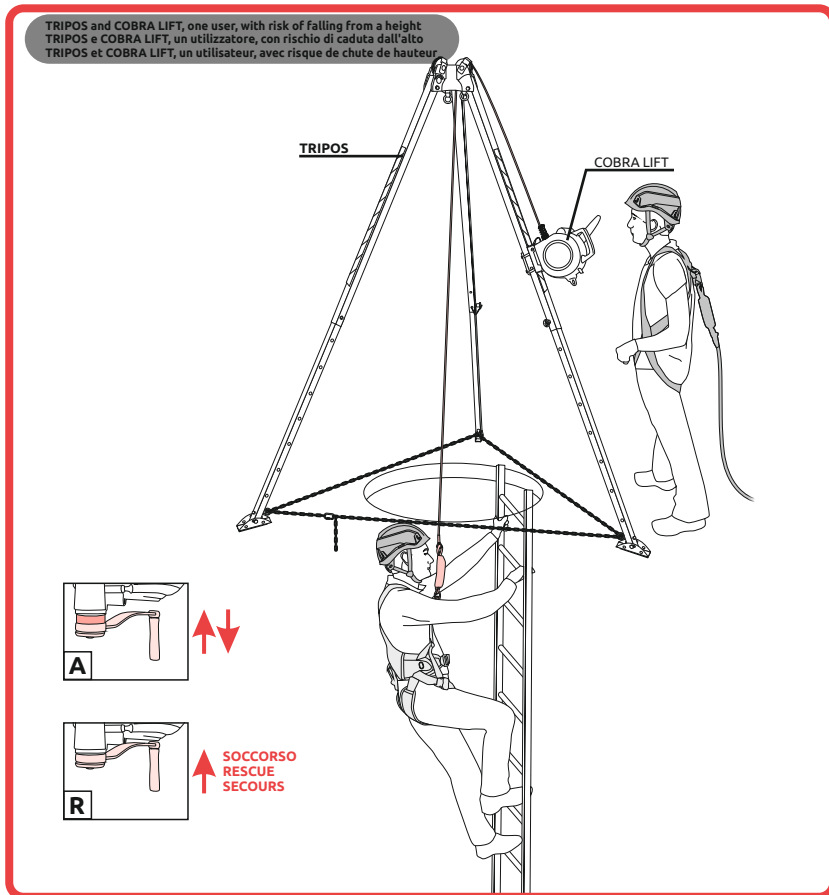
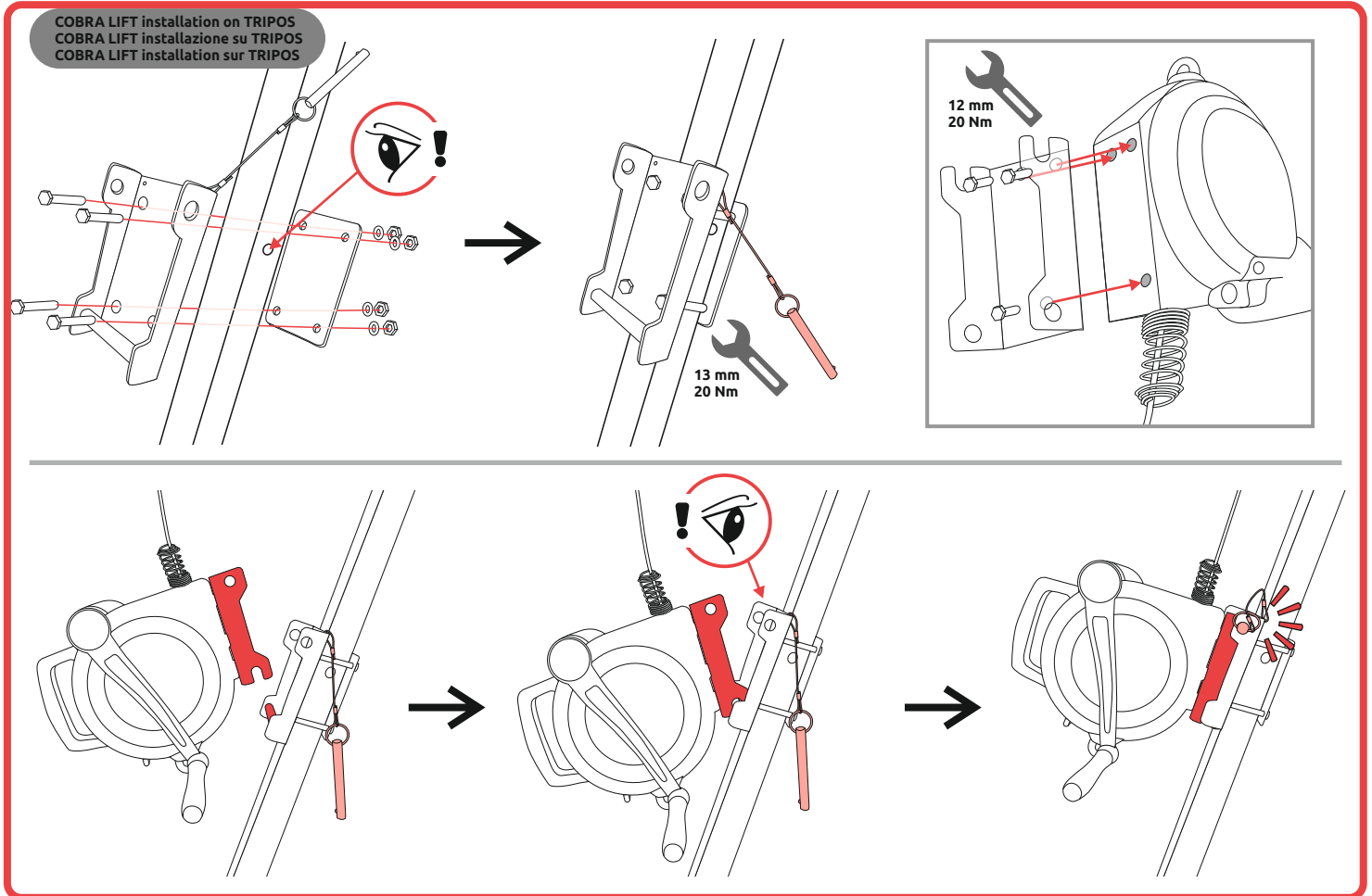
FALL ARREST  
 ANTICADUTA  
 ANTICHUTE

COBRA LIFT vertical use EN 360  
 COBRA LIFT uso verticale EN 360  
 COBRA LIFT utilisation verticale EN 360



COBRA LIFT rescue recovery  
 COBRA LIFT recupero di soccorso  
 COBRA LIFT récupération par sauvetage





TRIPOS and two COBRA LIFT, two users, with risk of falling from a height  
 TRIPOS e due COBRA LIFT, due utilizzatori, con rischio di caduta dall'alto  
 TRIPOS et deux COBRA LIFT, deux utilisateurs, avec risque de chute de hauteur

